



# **WATER PRODUCT CATALOGUE**



## About Us

Our company started in the 1970's with an idea of preserving the environment for the betterment of society. During that course of business, we pioneered the industry by supplying integrated fluid handling/water solutions. Now, with the trend of upstream industrialization and expanding urbanization in Indonesia, our portfolio of solutions has expanded into Fire Safety, Security, and Environmental systems. These solutions cover Water, Fire, and the Environment; elements that are deemed to be essential to human life.

Today, we are the leading company in Indonesia that offers innovative and modern solutions to meet your business needs and requirements. Through our distribution, engineering, and procurement and contracting services, we can be your one-stop-solution for pumps, rotating equipment, fire protection, safety, security, and environmental solutions.

To serve our customers throughout Indonesia; we operate our main head office, sales office, and workshop in Jakarta and its surrounding areas. Outside Jakarta, our branch offices and teams are available at Palembang, Surabaya, and Balikpapan. For flexibility and faster response to our customers' needs, we also work together with our dealer partners. Anytime, anywhere, there is no limitation in delivering our services across Indonesia.

## Our Vision & Mission

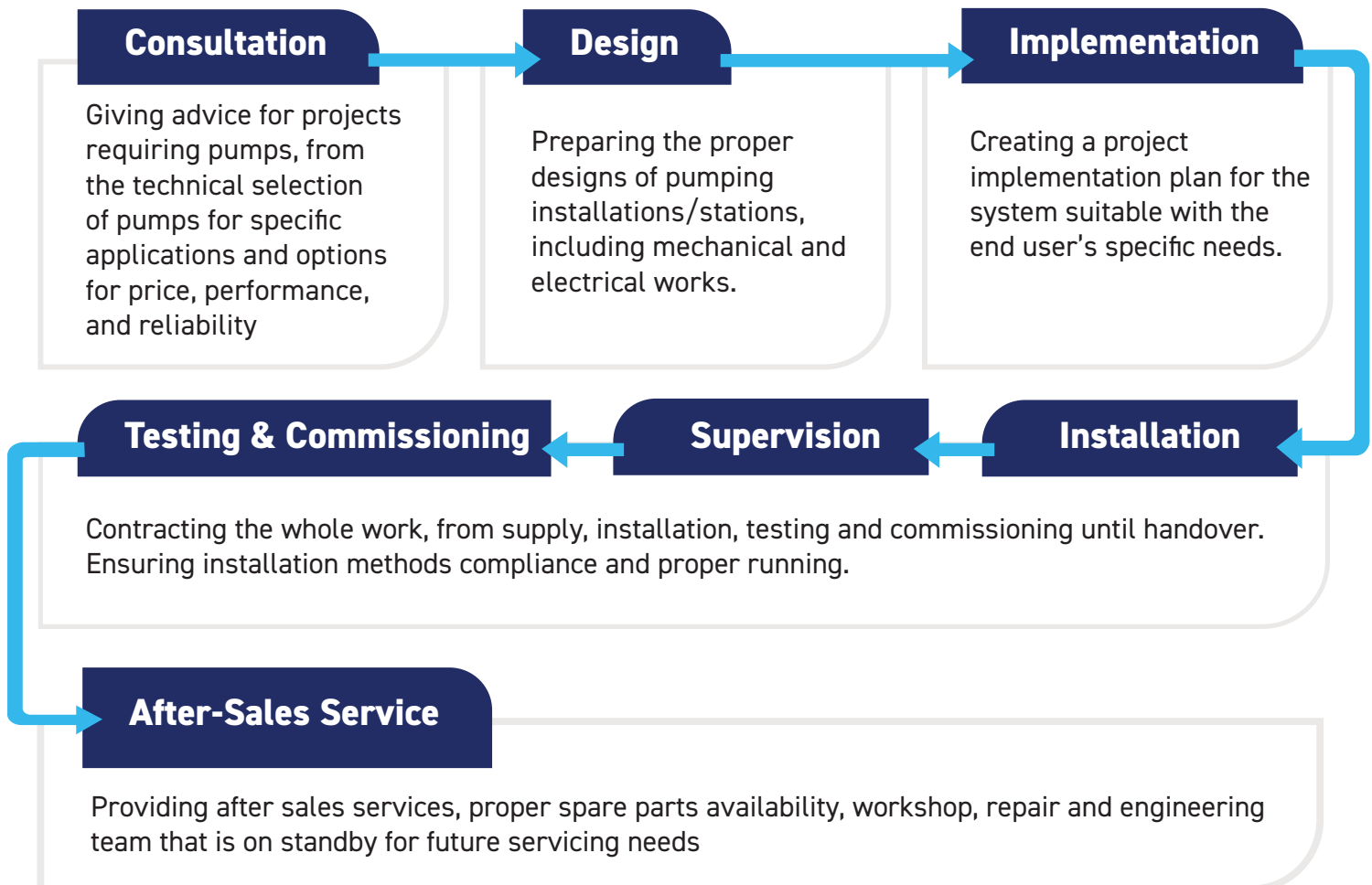
"To create sustainable value for both our stakeholder and ourselves", and to be an innovative water, fire and environmental resources management company for the highest satisfaction and assurance of our stakeholders"

"for Generations to Come" We provide innovative and dependable solutions to manage water and fire resources, growing economies sustainably with the environment, in order to for society to live more prosperously from generation to generation.

# Our **Products & Services**



One of our main business lines is to provide pump products, along with our principle **Ebara Corporation**. Ebara is a Japanese pump manufacturer established in 1912, with local manufacturing incorporated in Depok, Indonesia since 1980. As a distributor for Ebara pump products, we provide the following services:



## Our **Workshop & Warehouse**







## END SUCTION VOLUTE PUMP



**GS**  
MODEL



**FS**  
MODEL



**FS**  
COUPLED  
with MOTOR



## SELF PRIMING PUMP



**SQPB CAST IRON**  
MODEL  
(Dia. : 50, 80, 100 & 150 mm)



FOR SEA WATER  
**SQPB BRONZE**  
(Dia. : 50, 80, 100 mm)



## MIXED FLOW VOLUTE PUMP



**SZ**  
MODEL

(Dia. : 200 & 250 mm)



**SZ**  
MODEL

(Dia. : 300, 350, 400 & 500 mm)



## FOOT VALVE



## IBB PACKAGE BOOSTER SYSTEM (IBBS)

## IBB CONTROL PANEL



Horizontal End Suction Volute Pump



Horizontal End Suction Volute Pump  
(Inverter Model)



Vertical Multistage Pump





**CSA/CNA**  
MODEL



**SAL** MODEL



**GSO/  
GSOF** MODEL

SINGLE SUCTION  
PROCESS PUMP



**DS**  
MODEL

(Manual Type)



**DSA**  
MODEL

(Automatic Type)



**DSJ**  
MODEL

(Parallel Alternate Type)



**DVS**  
MODEL

(Manual Type)



**DVSA**  
MODEL

(Automatic Type)



**DVSJ**  
MODEL

(Parallel Alternate Type)



**DL**  
MODEL

(Manual Type)



**DLA**  
MODEL

(Automatic Type)



**DLJ**  
MODEL

(Parallel Alternate Type)



## SUBMERSIBLE PUMP with QDC



**DL**

MODEL

(Manual Type)



**DSC**

MODEL



## SUBMERSIBLE PROPELLER PUMP



**DSZ**

MODEL



**HZ**

MODEL



## FLOOD CONTROL PUMP



## STAINLESS STEEL CLOSE COUPLED PUMP



**2CDX-CDX**

MODEL



**3S**

MODEL



## FIRE FIGHTING PUMP



**CNPA**

MODEL

Horizontal Split Case Pump



**FSPA**

MODEL

End Suction Pump



## STAINLESS STEEL VERTICAL MULTISTAGE PUMP



**EVM**  
MODEL



**FSS**  
MODEL



**FSSC**  
MODEL



## VERTICAL IN-LINE PUMP



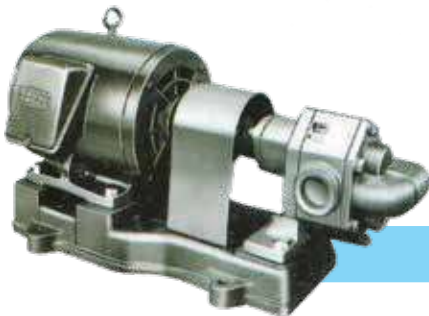
**LPD**  
MODEL



**LPDA**  
MODEL



## GEAR PUMP



**GP**  
MODEL

## HORIZONTAL MULTISTAGE PUMP



**MS, MSL, MSH**  
MODEL



## WATER RING VACUUM PUMP



**NVD**  
MODEL



**NV**  
MODEL



OPEN TYPE



SDC-U Series

Open Circuit Cross  
Flow Square Type



SNC-U Series

Open Circuit Cross  
Flow Square Type



CDW - C Series

Cross Flow  
Square Type

CLOSED TYPE



MXC-U Series

Cross Flow  
Closed Type

PROJECT REFERENCES



Bandung Internasional Convention Center  
Bandung



Graha Irama Rasuna Said  
Jakarta



Hyatt Regency Sanur  
Bali



Kalbe Farma  
Cikarang



Thamrin Nine Tower 2  
Jakarta



Thamrin Nine Tower 1  
Jakarta



Central Motor Wheels  
Indonesia



Olam Food  
Tangerang



Tempo EJIP  
Cikarang





**IFW**

MODEL

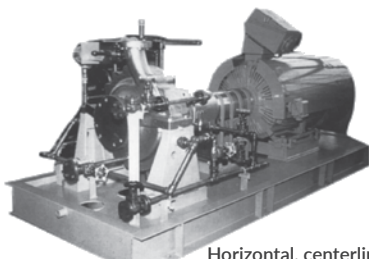
Horizontal, Foot support, radial split  
volute casing Single stage,  
Closed impeller API 610-OH1, ISO 2858



**IFS**

MODEL

Horizontal, Foot support, radial split  
volute casing Single stage,  
Open impeller API 610-OH1, ISO 2858



**UCW**

MODEL

Horizontal, centerline support,  
radial split volute casing Single stage  
Closed impeller API 610-OH2



**VPCS**

MODEL

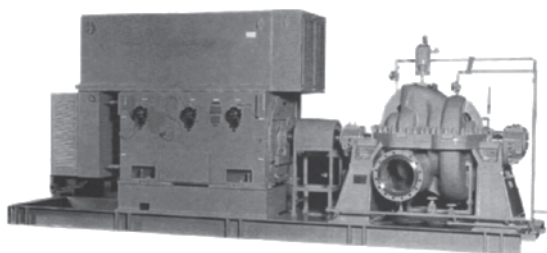
Vertical, canned, radial split,  
fusor type casing Multistage  
API - VS6



**VPCS**

MODEL

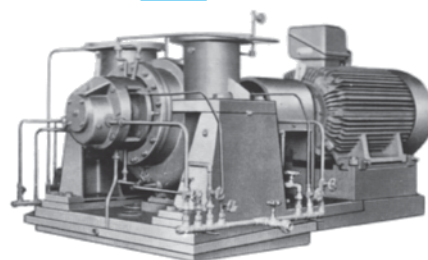
Vertical, canned, radial split,  
fusor type casing Multistage  
High pressure type API - VS6



**SPL**

MODEL

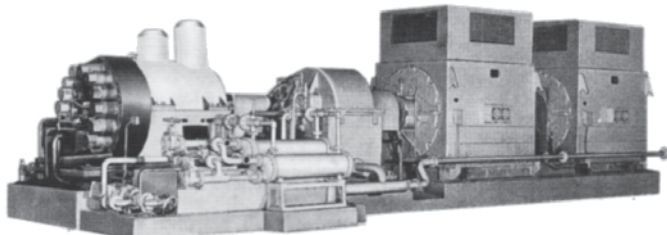
Horizontal, axial split, double volute casing  
Two stage, opposed impeller API 610-BB1



**KS**

MODEL

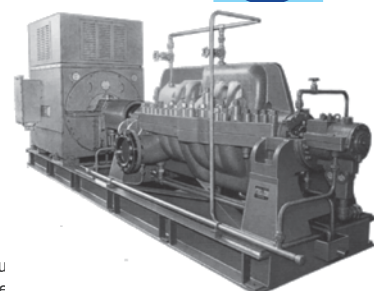
Horizontal, centerline support, radial split, double volute casing  
Single stage API 610-BB2



**HSB/  
HDB**

MODEL

Horizontal, centerline support, double case, radial split, axial split  
Multistage, opposed impeller API 610-BB5



**SP,  
SPD**

MODEL

Horizontal, axial split, double  
Multistage, opposed impeller



## PROCESS PUMP



**VY, VZ**  
MODEL



**VS**  
MODEL



**VPSS**  
MODEL

## IBB TRAILER PUMP



**IBB-IRRIS-MP**  
MODEL



**IBB-MPIS-025**  
MODEL



## WATER PANEL TANKS



**FZ**  
MODEL

675M<sup>3</sup> (15X15X3m)



**VS**  
MODEL

1764m<sup>3</sup> (21X21X4m)

PROJECT  
REFERENCE



German Centre - Bumi Serpong Damai

## Flood Control Pumps



400SZ



Ebara mixed flow model 400SZ @ 35 L/sec x 6m, installed for heavy equipment workshop at Sangata, East Kalimantan.

## Flood System



HZ



Flood system using Ebara Horizontal Mixed Flow Pumps Type "HZ" Capacity 2,5m<sup>3</sup>/sec at 4m in head, as installed at Kedurus Pump Station, Surabaya East Java.

## Cargo Pumps



Cryogenic LNG



### EBARA LNG Circulation Pump

The inside view of Surya Aki's Special Tank where the Submersible Pump is installed

### EBARA LNG Loading Pump

Ebara LNG Pump as installed on Cargo Board Surya Aki



## Cooling Pumps



1950VYNM

Ebara model 1950VYNM @ 8520 L/sec x 25,2m with motor power 2800 kW, installed at power plant, East Java.



### EBARA LNG

Cargo Pump were on board "Surya Aki" 19.000m<sup>3</sup> LNG carried





**F90M**

Fuji Metal Locator



**FJN-501**

Fuji Water Pressure Recorder



**FSB-8D**

Fuji Digital Sound Detector



**HG-10All**

Fuji Leak Noise Detector



**LD-7**

Fuji Leak Noise Detector



**MLHI**

Fuji Marker Locator



**NPL-100**

Fuji Non Metallic Pipe Locator



**PL-200**

Fuji Metal Pipe Locator



**PORTAFLOW C**

Ultrasonic Flow Meter



Fuji Boring Bar



Fuji Simple  
Listening Stick



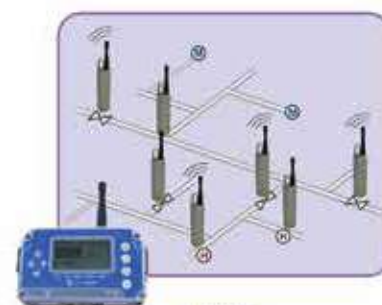
**DNR-18**

Fuji Water Leak Detector



**LC-2500**

Fuji Leak Noise Correlator



**LNL-1**

Fuji Leak Noise Logger System



**JH CHANNEL  
PUMP**



**CSP SCREW  
PUMP**



## PRESSURE TANK



**STEEL PRESSURE TANKS**



**ANTI-LEGIONELLA  
PRESSURE TANKS &  
ADAPTORS**



**PRESSURE TANKS FOR  
HARSH ENVIRONMENTS**



**POTABLE HOT WATER  
EXPANSION TANKS**



**NON-POTABLE  
HOT WATER  
EXPANSION TANKS**



**NON-POTABLE  
HOT WATER  
EXPANSION TANKS**



**PUMP CONTROLLERS**



**COLUMN PIPES**



**WATER MOVEMENT  
ACCESSORIES**



## INDUSTRIAL

- **Factories**
- **General Industry**
  - PT Aska International
  - Astra Agro Lestari
  - Bando Indonesia
  - Coca Cola
  - Jabatex
  - Indorama Synthetics
  - Prointal
  - PT Ashahimas
  - PT Astra Honda Motor
  - PT Bridgestone Tire Indonesia
  - PT Bumi Mulia Indah Lestari
  - PT Charoen Pokphand Indonesia
  - PT Djabesmen
  - PT Enkei Indonesia
  - PT Futami Food
  - PT Fukoku Tokai Rubber Indonesia
  - PT Garuda Food
  - PT Indomobil
  - PT Indofood Sukses Makmur
  - PT IRC INOAC Air Liquid Indonesia
  - PT Kawai
  - PT Kao Indonesia
  - PT Mulia Glass Float Division
  - PT Nutrifood Indonesia
  - PT Pulogadung Steel
  - PT Summitomo Rubber
  - PT Torabika Eka Semesta
  - PT Toyobesq Precision Parts Indonesia
  - PT Unilever Indonesia
  - PT United Can
  - T.B Gramedia
  - Win Textile Yamaha Group
  - Yamaha Group

## GOVERNMENT

- **Hospitals**
- **Schools**
- **Others**
  - UI Depok
  - UGM Yogyakarta
  - Universitas Taruma Negara
  - Universitas Terbuka Jakarta
  - Islamic Centre Samarinda
  - Jakarta Eye Center
  - RS Biofarma
  - RS Ciputra
  - RS Darmais
  - RS Mata Palembang
  - RS Medistra
  - RS MMC
  - RS Omni Alam Sutera
  - RS Pamulang
  - RS Peln Jakarta
  - RS Puri Indah
  - RS Pondok Indah
  - RS Pulomas
  - RS Siloam Gleneagles
  - RS Taruma Negara
  - RS USU Medan
  - RSUD Padang Panjang
  - PDAM Banten
  - PDAM Batang Hari
  - PDAM Batu Kuning & Batu Raja
  - PDAM Belitung
  - PDAM Bekasi
  - PDAM Betuah
  - PDAM Depok
  - PDAM Kabupaten Bogor
  - PDAM Kabupaten Cipayem
  - PDAM Karawang
  - PDAM Makasar
  - PDAM Muara Dua Palembang
  - PDAM Pekanbaru
  - PDAM Pontianak
  - BPD Sijunjung
  - IKK Project
  - Angkasa Pura Project



## OIL & GAS / MINING / CHEMICAL INDUSTRY



- Petro-Chemical
- Energy Industry
- Badak LNG
- BP West Java
- Chevron Indonesia
- Chevron Pasific Indonesia
- Gresik Power Plant
- Tangguh LNG
- Krakatau Steel Group
- IP Suralaya
- IP Tj Priok
- PJB Cirata
- PLN PLTGU Cilegon
- PLTU Rembang
- Paiton Energie
- Petrochina
- Pertamina
- PT Trans Pasific Petro Chemical Indotama
- PT Amoco Mitsui Indonesia
- PT Antam Pomala
- PT Arun
- PT Bukit Asam
- PT Chandra Asri
- PT Kaltim Prima Amonia
- PT Kaltim Prima Coal
- PT Indocement
- PT Medco Enegy
- PT Pardic Jaya Chemical
- PT Petrochem
- PT Petrokimia Gresik
- PT Petrokimia Nusantara Interindo
- PT Polytama Propindo
- PT Pupuk Iskandar Muda
- PT Pupuk Kaltim
- PT Pupuk Kujang
- PT Semen Baturaja
- PT Siam Maspion
- PT Tri Polyta
- PT Vico Indonesia
- Total E&P Indonesia

## DOMESTIC & COMMERCIAL



- High-rise Buildings
- Condominiums
- Apartements
- Hotels
- XL Tower
- Telkomsel TB Simatupang
- Telkomsel Buaran
- Gedung Cyber
- Alam Sutera Office
- Menara Tujuh Gading
- JACC Waduk Melati
- Graha Banda Rekso
- Wisma Nusantara
- SCBD Office Tower
- Menara Top Food
- Belleza Permata Hijau
- Taman Sari Apartment
- The Jakarta City Center (TCC)
- Hampton Park
- Kasablanka Mansion
- Margonda City
- Nusa Dua Residence
- Thamrin Residence
- ST. Moritz
- Hotel Nikko Indonesia
- Hotel Hilton
- Hotel Labersa
- Hotel Four Season Bali
- Hotel Ritz-Carlton Bali
- Hotel Sultan
- Office Buildings
- Shopping Centers
- Serpong Tower Town Square
- Summarecon Serpong Mal
- La Piazza Mall
- Plaza Senayan
- Thamrin City
- Pulo Gadung Trade Center
- Palembang Square
- Metro Grosir Tanah Abang
- IT Depok
- Lindeteves Trade Center
- WTC Mangga Dua
- Batam Mall
- Blok M Square
- Citoworu Mall
- Giant Hypermart Bintaro
- Plaza Indonesia
- Bekasi Square
- Ciputra World Jakarta
- Kemang Village Mall
- Kelapa Gading Mall
- Metro Trade Center Bandung
- Pluit Junction
- Senayan City
- Tamini Square
- Sport Club Medan Satria



**Indobara Bahana**  
generations to come



#### Head & Sales Office

📍 Jl. Gunung Sahari Raya  
No. 57G,  
Jakarta Pusat 10610  
Indonesia  
☎ +62-21 420 9908  
✉ info@indobara.co.id

#### Workshop & Warehouse

📍 Jl. Palm Hill No. 7, Kadumangu,  
Kec. Babakan Madang,  
Kab. Bogor,  
Indonesia  
☎ +62-21 501 27800  
✉ info.wrk@indobara.co.id

#### Branch Office Surabaya

📍 Kom. Mangga Dua, Blok AA2-16/17  
Jl. Jagir Wonokromo 100,  
Surabaya 60244  
Indonesia  
☎ +62-31-848 3383  
✉ info.sby@indobara.co.id

#### Branch Office Bali

📍 Jl. Pantai Saba No. 7A  
Ds. Saba, Kec. Blahbatuh  
Kab. Gianyar, Bali  
Indonesia  
☎ +62-856-2903-762  
✉ +62-811-1368-184